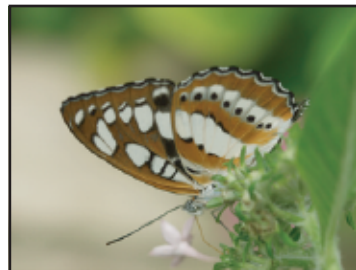


# Common Sergeant

*Athyma perius*



Inside



Outside



Chrysalid

# Common Sergeant

*Athyma perius*

Order: Lepidoptera  
Family: Nymphalidae

**Etymology:** The origin of *Athyma* is currently unknown. In Greek mythology, Perius was one of the sons of Aegyptus.

**Wingspan:** 2 – 2.5 inches (50 – 60 mm)

**Habitat:** The Common Sergeant is often found visiting urban gardens, but their primary habitat is open forest and surrounding secondary growth.

**Host Plant:** The larvae are known to feed on several different species of plants in the genus *Phyllanthus* and *Glochidion*.

**Adult Food Source:** Adults will feed on a variety of flowers; they especially like the smaller flowers such as *Lantana*. The adult butterflies have also been observed visiting rotting fruit.

**Life History:** While the females visit flowers for nectar the males patrol those areas looking for a receptive female. After mating, the females look for host plants on which they can lay their eggs. After the eggs hatch the caterpillars feed on the plant until they are ready to form their pupae.

**Flights:** There are multiple generations of the Common Sergeant making it possible to find adults.

**Fun Facts:** As an adult butterfly the Common Sergeant looks very similar to the Common Sailor (*Neptis hylas*). The major difference between the two is the white strip found on the leading edge of the forewing. On the Common Sergeant that white band is a single long dash with three dots. The Common Sailor on the other hand has a longer dash line and a single dot.

**Range:**

